

DSX-1 64 Position Rear Cross-Connect

Model SA-2115-2001



NAME

DSX-1 64 Position Rear Cross-Connect

ORDER NUMBER

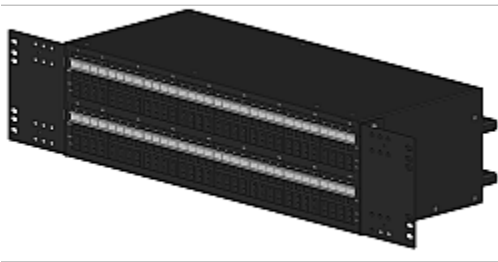
SA-2115-2001

Features:

- 64 Position
- Rear Cross-Connect
- Red Tracer LEDs
- Vertical Jumper Rings
- WECO/EIA mounting brackets (23")
- Chassis color - Black

BENEFITS

- Network element replacement and testing without service interruption
- Faster out of service recovery
- Basic maintenance & physical layer access
- Easy future network migration & planning
- Consistent cable management
- Visual LED indication of completed cross-connects



SPECIFICATIONS

DIMENSIONS (H X W X D)	5.2 x 18.3 x 10 " 132 x 465 x 254 mm
-------------------------------	---

INSERTION FORCE	7.0lbs MAX
------------------------	------------

WITHDRAWAL FORCE	1.5 lbs MIN
-------------------------	-------------

SPECIFICATIONS

INTERFACE	Designation	1 - 64
	Cross-Connect Field	Rear Wire-wrap
	Network Element Field	Rear Wire-wrap
	Monitor/In/Out Jack Field	Front Bantam Connectors

ELECTRICAL	Power	-48V Office Battery for LEDs
	Insertion Loss	< 0.5 dB at 772 kHz
	Crosstalk	< -60 dB
	Return Loss	< -26 dB at 772 kHz
	Monitor Level	21 dB below signal level
	Characteristic Impedance	100 ohms

OPERATING TEMPERATURE	-40 to 149° F
	-40 to 65° C

