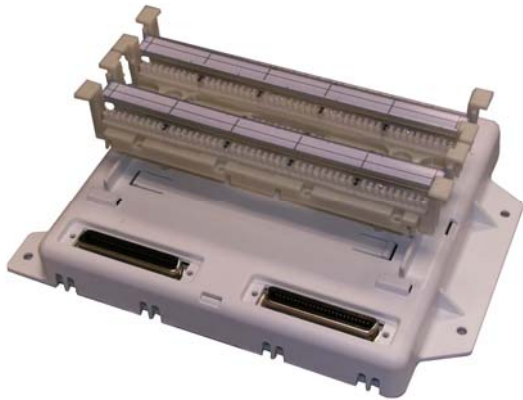




# MDU110-V VDSL2 & ADSL/2+ Multi-Dwelling Splitter



## Product Benefits

- Industry Compliant
- Compatible with HPNA home networking
- High density – 25 ports = Low cost per port
- Utilizes three industry standard distribution blocks
- Light weight
- Secondary lightning/surge suppression
- Quick, easy and logical installation
- New or existing residential and commercial multi-dwelling units

## Product Description

To meet the growing demand for broadband Internet access, property owners and service providers are looking for ways to rapidly deploy cost-effective solutions to meet tenant needs and generate incremental revenue streams. The MDU110-V allows service providers to cost-effectively deploy xDSL service to an entire multi-tenant property portfolio.

Comtest Networks' MDU110-V is a modular, 25 ports, full POTS Splitter/Line Conditioner designed to provide POTS services in conjunction with ADSL2+ and VDSL2 services. The MDU110-V prevents high frequency xDSL signals from interfering with POTS services. It also prevents low frequency POTS signal from interfering with xDSL services.

Like Comtest's other CPE devices, the MDU110-V innovative design address specific issues that affect the delivery of Triple Play services such as ring trip; a major cause of pixelization. The MDU110-V in conjunction with Comtest's 4000V Series, H-192 or our MTAS (Metallic Test Access shelf) CO splitters virtually eliminates modem re-syncing errors, ensuring error free video reception.

The MDU can be installed in a variety of multi dwelling or multi tenant configurations, whether they are apartments, condominiums, hotels or office buildings. The MDU110-V is installed either as a stand alone unit or in multiples at the demarcation point, or within the MDU telecommunication wiring closet. Depending on the deployment, Telco's can pre-wire all 25 ports prior to occupancy and then provision from the CO eliminating the need for expensive truck roles, or provision on site on an as needed bases.

The MDU110-V allows service providers a quick, easy, logical and cost effective means of deploying ADSL2+ and VDSL2 services. The MDU110-V is configured using three industry standards, 25 pair 110 distribution blocks, Line, POTS and xDSL.

[www.comtestnetworks.com](http://www.comtestnetworks.com)

Tel: 613-369-5499

Email: [sales@comtestnetworks.com](mailto:sales@comtestnetworks.com)

## MDU Specifications

### Mechanical

92mm(H) x 271mm(W) x 203mm(D) [3-5/8" x 10-11/16" x 8"]  
Capacity: 25 Subscriber ports per unit  
Mounting: Wall Mount (accepts four #8 or #10 wood screws)

### Compliance

T1.413, T1.424, ITU-T G.992.1, G.992.3 and G.992.5, G.993.1, G.993.2, CE, UL/CSA, FCC part 68, CS03

### Communications Interface

Line, POTS and xDSL connect via three 110 distribution blocks

### Options

Signature circuit

### Environment

Operating Temperature: -40 to +65 degrees Celsius  
Storage Temperature: -40 to +70 degrees Celsius  
Humidity: 5 to 95% (non-condensing)

## Ordering information

### Comtest product      Ordering code

Standard..... SA-2871-0021  
w/ Signature circuit ..... SA-2871-0022

*Comtest's extensive support and distribution network meets the needs of service providers, equipment manufacturers and installers on six continents every day. Our goal is to deliver innovative solutions to critical elements of the network while maintaining reliability, quality and on-time delivery at a competitive price.*

*All of Comtest's products have a limited three year warranty against manufacture defects.*

[www.comtestnetworks.com](http://www.comtestnetworks.com)

Tel: 613-369-5499

Email: [sales@comtestnetworks.com](mailto:sales@comtestnetworks.com)  
Ottawa, ON Canada, K2E 6V4

171 MacFarlane Road, Unit E

Fax: 613-368-4616