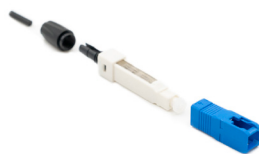


Description

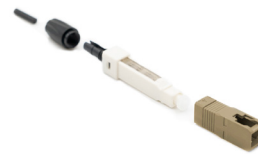
Mechanical Connector Premium KeyQuick® 10 SC APC SM 9/125 250/900um | **KQ10SCA**
Mechanical Connector Premium KeyQuick® 10 SC UPC SM 9/125 250/900um | **KQ10SC**
Mechanical Connector Premium KeyQuick® 10 SC UPC 62,5/125 MM 250/900µm | **KQ10MM**
Mechanical Connector Premium KeyQuick® 10 SC UPC OM4 MM 250/900um | **KQ100M4**



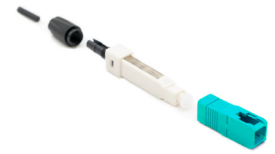
KQ10SCA



KQ10SC



KQ10MM



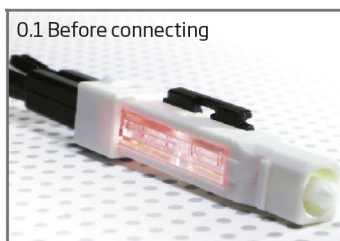
KQ100M4

In recent years the data communication capabilities supporting the Enterprise and Data Center markets have been expanding at breakneck speed. Fibre Optic Connector SC are commonly used in fibre optic backbone and horizontal application to provide high-speed data transmission.

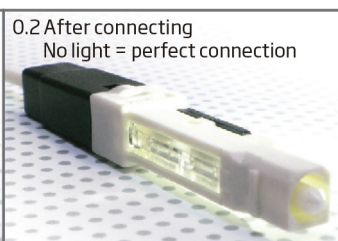
One of the most important considerations of KeyQuick® 20 is the excellent performance, and the easy to be assembled at the installation site by workers. Without the need of tools, our connector is accessible to be assembled by everyone without any special skill sets.

The transparent body enables immediate splice verification by our Visual Fault Locator. The splicing method is as simple as aligning the V-groove and sliding to tie-up the fibre. The "Sliding and V-groove Tie-up" splicing method is possible to clamp fibre and coated fibre with just a single part number.

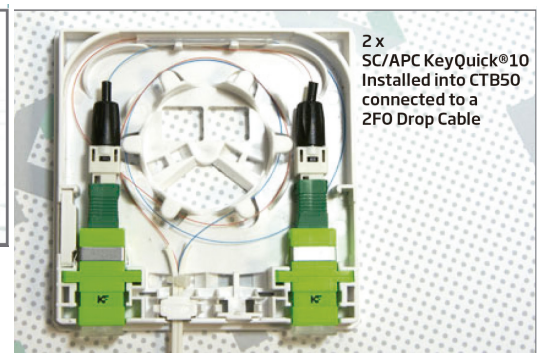
The qualification test results ensure the quality of our products subjected to severe mechanical and environmental conditions.



0.1 Before connecting



0.2 After connecting
No light = perfect connection



2 x
SC/APC KeyQuick®10
Installed into CTB50
connected to a
2FO Drop Cable

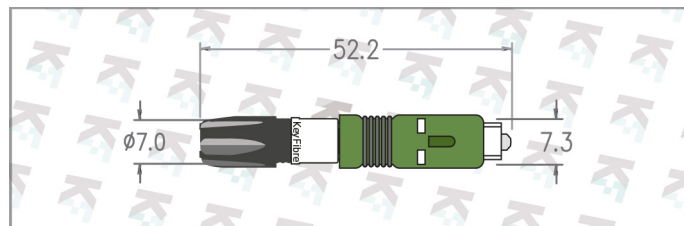
Application

- FTTx System
- LAN, WAN and Metro Networks
- Data Centers
- Networking Monitoring
- Telecommunication

Features

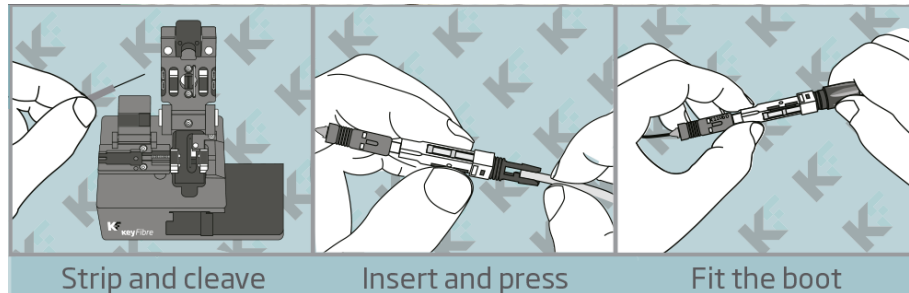
- Universal for 250µm/900µm
- Pre-polished connector
- No Epoxy required
- No Tool or jig required
- Transparent body for immediate splice verification
- 30 seconds for connecting
- Mean Insertion Loss: 0.2 dB
- Releasable after connecting
- UL 94-V0. KeyQuick® 10 can pass the Underwriters Laboratory (UL) Standard 94 Flammability Test

Specifications



Cable size	250µm/900µm
Assembly time	30 seconds (after fibre preparation)
Insertion loss, typical	0.2 dB (APC)
Return loss	-53 dB Typical (APC)
Pull Strength (N)	Universal: 5N
Operating Temperature (°C)	-40 ~ +75
Materials	Engineering plastics & index matching gel (IMG)

Assembly procedure



Benefits

KQ10, Install with Confidence. Excellent Alternative to Fusion Splicing. Pre-Polished and Universal, Releasable, Tool-less design.

Why UNIQUE? Why 100% GOOD?

The strongest and unique key point of KeyQuick® system is its transparent body, that enables immediate splice verification by using a VFL. The Unique Connector that can guarantee 100% good results, no light means perfect connection.

Fast, Easy & Reliable

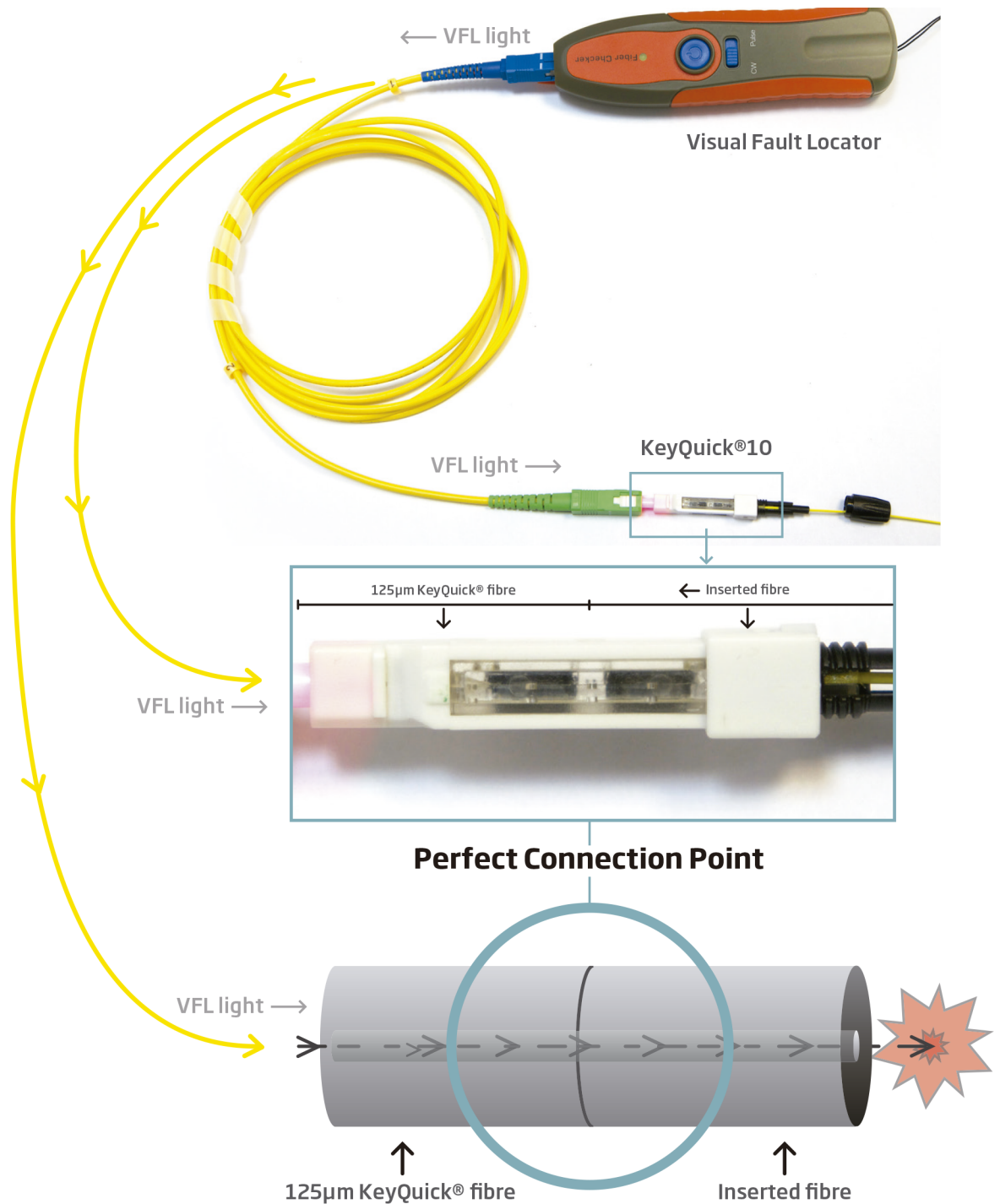
With proven field-installable connector technology, fibre terminations using KeyQuick® Connector system are fast, easy and reliable.

Tools means time and cost

Without the need of tools, KeyQuick® system is designed to be installed by everyone without any special skills.

- For 250µm & 900µm.
- Pre-polished connector
- No epoxy required
- No skills, no tool required
- Transparent body for immediate visual check
- 30 seconds for connecting
- Mean Insertion Loss 0.2 dB
- Releasable after connecting
- UL 94-V0.

KeyQuick® Transparent Body Concept



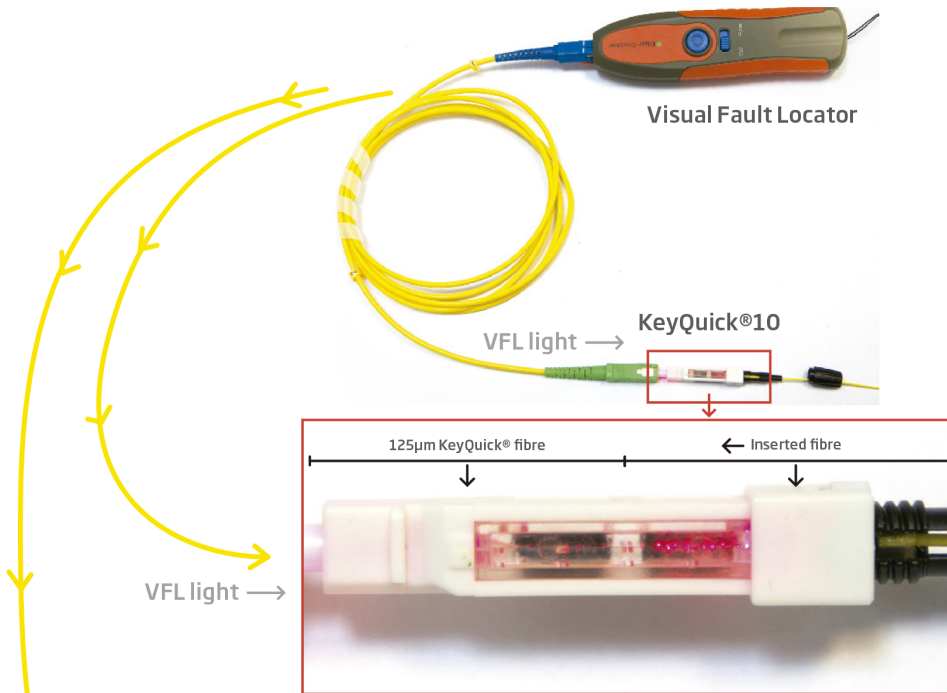
Light disappears = Perfect connection
Under **0,1** dB guaranteed



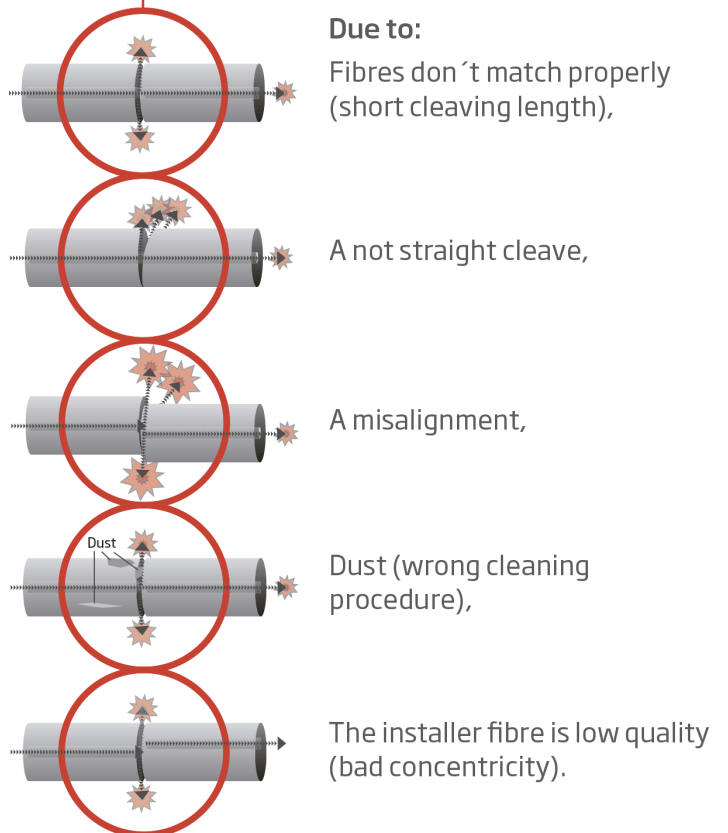
DATA SHEET

KeyQuick® mechanical connector

Doc. Ref.: FT-EN-V1-KF-KQ10SCA-KQ10SC-KQ10MM-KQ100M4
Date: 24/05/2024



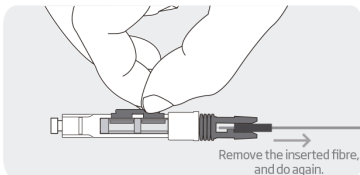
Light is visible = bad connection



Use the **release method** to redo the installation in order to get a perfect connection.

Release Method

Use fingernail to release the buttons.



cia SPAIN. Tel +34 962 779 421



keyFibre

KEYQUICK® CONNECTIVITY

PAGE 5 OF 6

DATA SHEET

KeyQuick® mechanical connector

Doc. Ref.: FT-EN-V1-KF-KQ10SCA-KQ10SC-
KQ10MM-KQ100M4
Date: 24/05/2024

Packagind details

P/N	Housing color	Boot color	Pieces Carton per	Carton size (cm)	Carton Weight (Kg)
KQ10-SCA	Green	Black	25	17.5 x 12.5 x 4.5	0.20
KQ10-SC	Blue	Black	25	17.5 x 12.5 x 4.5	0.20
KQ10-MM	Beige	Black	25	17.5 x 12.5 x 4.5	0.20
KQ100M4	Aqua	Black	25	17.5 x 12.5 x 4.5	0.20

Related products



Microscope



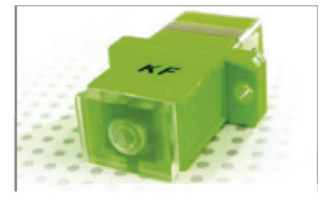
Cleaner



KTKB



Visual Fault Locator



SC/APCAdapter Transparent Dust Cap

