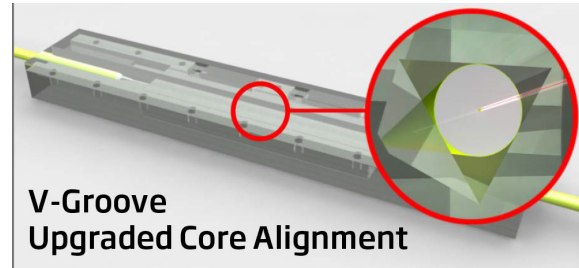
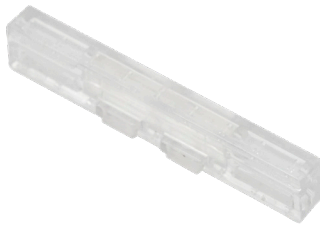
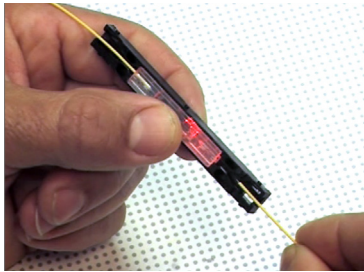


Description

KeyQuick® MS201 Mechanical Splice for 250/900um | **MS201**



**V-Groove
Upgraded Core Alignment**



Improved Performance. Even Lower Loss now. A Flat Cleave Technique with a Reflectance Performance of Grade 1 specifications >60dB. Average values: IL 0.03dB, RL 63dB, using KeyCleave®.

Upgraded Core Alignment. In the strictest sense, KeyQuick® Mechanical Splice is a permanent connection made between two optical fibers for an indefinite period of time without movement. MS201 is viable for analog signal transmission. For quicker connections, home drops and network applications.

Reducing Assembly Steps. To make installation even quicker and more economical, KeyFibre has reduced assembly steps. Same splicing procedure for 250 or 900 microns.

The unique with no need of Loss Tester. The unique "light-design" functionality of KeyQuick® whole range allows technicians to guarantee the connections using a VFL. No tester is needed to verify the loss.

Application

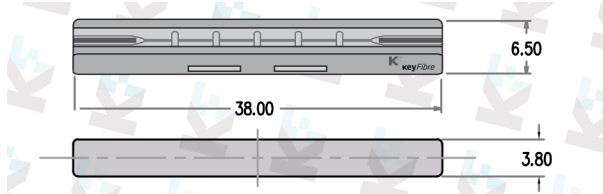
- FTTx System.
- LAN, WAN and Metro Networks.
- Data Centers.
- Networking Monitoring.
- Telecommunication.

Features

- No Epoxy required
- V-groove technology
- No Tool or jig required
- Easy-to-install, low skill sets required
- Average Insertion Loss: 0.03 dB
- Average Return Loss: 63 dB
- Transparent body for immediate splice verification
- Universal for 250/900µm fibres
- Installation time: 30 seconds
- Releasable after connecting plant
- Ideal FTTH solution: outside or inside a building

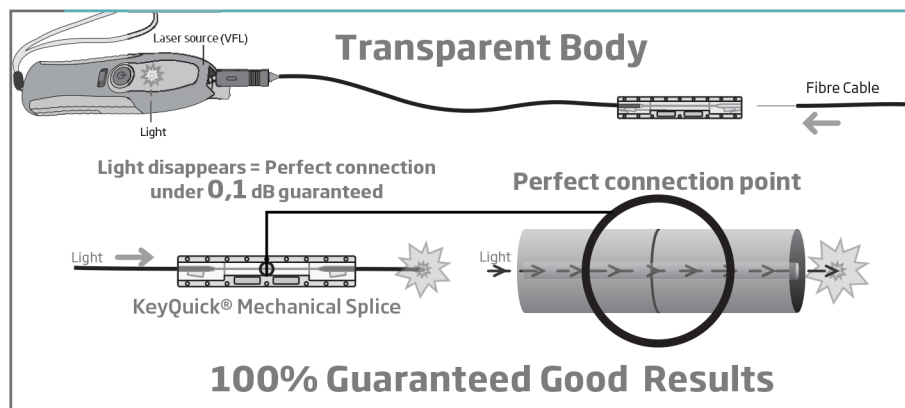
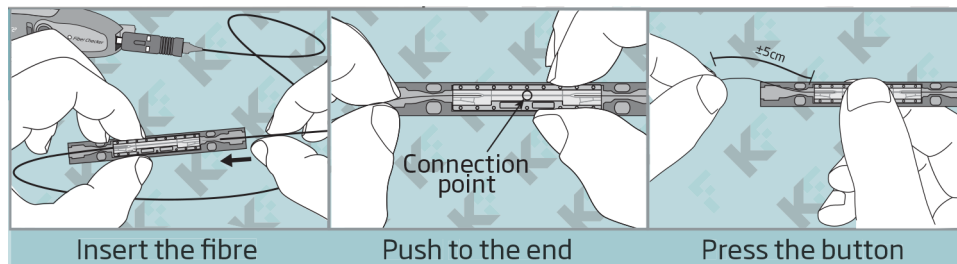


Mechanical Splice specifications



Fibre size	250µm or 900µm
Assembly time	30 seconds (after fibre preparation)
Guaranteed insertion loss	Under 0.1 dB
Return loss	≥60 dB
Pull Strength (N), Typical	2 cores
IP protection level	5N
Operating Temperature (°C)	-40~+75
Materials	Engineering plastics & index matching gel (IMG)
Dimension	3,8x0,38x0,65

Assembly procedure



Benefits

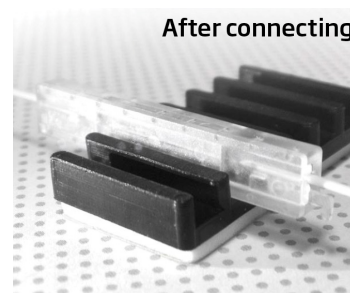
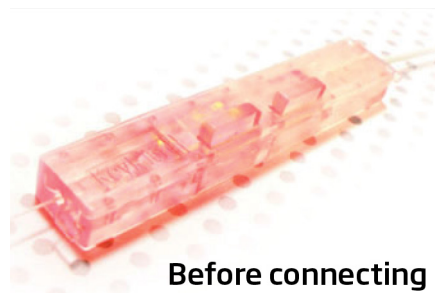
Same Connector Concept, Same Benets:

The most important consideration is the excellent performance, IL 0.1dB and easy to be assembled at the installation site by workers using standard tooling. No other brand can guarantee first-time good results without using a power meter to check values. Designed totally transparent, allows inmediate visual check.

Why UNIQUE? Why 100% GOOD?

The strongest and unique key point of KeyQuick® system is its transparent body, that enables inmediate splice verification by using a VFL.

The Unique Mechanical Splice which can guarantee 100% good results, no light means perfect connection.



Fast, Easy & Reliable

With proven Mechanical Splice technology, fibre terminations using KeyQuick®MS201 system are fast, easier and reliable.

Tools means time and cost.

Without the need of tools, KeyQuick® system is designed to be installed by everyone without any special skills.

- Reusable
- Universal
- No tools
- Less time
- Less expensive
- No skills
- Easy to Install
- Long life
- 100% good results

Packaging details

P/N	Pieces per Carton	Carton size (cm)	Carton Weight (Kg)
MS201	50	17,5 x 12,5 x 4,5	0,20

Related products

