



Features

- High-speed network compatible
- Reliability is improved by elimination of the air Back-Up-Gap (BUG)
- Telcordia Analysis report DA-1843
- UL Listed per UL 497 (File: E53117)
- Meets test requirements of Telcordia GR 974, GR1361, SR 5165 and RUS PE-80
- Multi-stage protection
- Balanced protection
- Quick response to surges
- High energy handling
- Binding post or optional Insulation Displacement Connectors (IDC)

C-2377-455HS Series Station Protector

CNI Model C-2377-455HS Series station protector is a new generation telecommunications station protector designed to be the best choice for protecting copper pair voice-band and high-speed data circuits. Combining the strengths of Gas Discharge Tube (GDT) and solid-state overvoltage protection, the C-2377-455HS integrates three advanced technologies: an advanced GDT, precision matched metal oxide varistors (MOV), and a switch-grade Fail-Short mechanism. The C-2377 series offer superior service life, far exceeding Telcordia standards.

The C-2377-45 can be used universally for POTS and high-speed data, e.g. ISDN, ADSL, ADSL2+, VDSL, VDSL2, other xDSL protocols and high speed Ethernet. The technology used with-in the C-2377-45 provides unparalleled overvoltage protection with low loss on paired copper communications circuits. The Model 455 is the most economical, reliable and effective choice to protect paired copper communications circuits. The IDC version, with environmental sealant, provides additional ease of installation and protection against corrosion.

Characteristics

Tested per IEEE C62.31, UL 497, CSA C22.2, Telcordia GR-1361 and applicable sections of Telcordia GR 974.

DC Breakdown	300-400 V
AC Breakdown	60 Hz 300-400 V
Impulse Breakdown.....	100 V/μs 600 V
	1000 V/μs 650 V
Insulation Resistance	100 Vdc > 1 GΩ
Insertion Loss	100 MHz < 0.4 dB (Category 5)
Return Loss	100 MHz > 14 dB (Category 5)
Capacitance Line to Line - Binding Post.....	1 MHz 12 pF typical
Capacitance Line to Line - IDC	1 MHz 14 pF typical
Capacitance Line to Ground - Binding Post	1 MHz 24 pF typical
Capacitance Line to Ground - IDC.....	1 MHz 28 pF typical
Impulse Reset ¹	52 V, 260 mA < 10 ms ³
	135 V, 200 mA < 10 ms ³
	150 V, 200 mA < 150 ms
Impulse Life Characteristics ²	
(Per-Side, Simultaneously)	100 A, 10/1000 μs > 3000 operations
	300 A, 10/1000 μs > 1000 operations
	500 A, 10/1000 μs > 1000 operations ⁴
	2,000 A, 10/250 μs > 100 operations
	5,000 A, 20/100 μs > 10 operations
	20,000 A, 8/20 μs > 10 operations ⁴
AC Life Characteristics.....	0.5 A rms continuous > 30 seconds
	1 A rms, 1 second, 600 ft. cable > 60 operations
	1 A rms, 1 second, 1 mile cable..... > 60 operations
	10 A rms, 1 second > 20 operations
	200 A rms, 11 cycles..... 1 operation ⁵
	120 A rms, 0.1 second 1 operation
Life Test Criteria	
Insulation Resistance Throughout the Life Test	100 MΩ
Life Test Failures.....	0.0 %
Failures During Environmental Cycling w/ surges	0.0 %
Fail-Short (vented or non-vented gas tube)	> 30 Arms, simultaneously
Operating Temperature	-55 to +85 °C
Moisture Sensitivity Level.....	1
ESD Classification (HBM).....	N/A

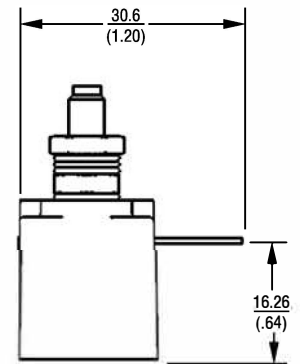
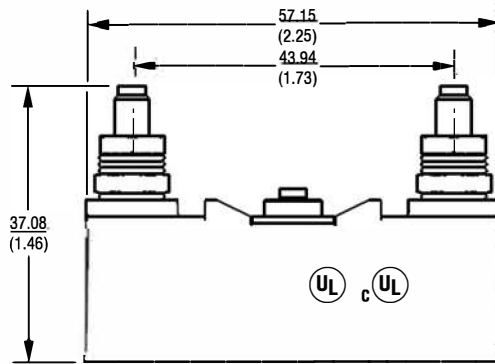
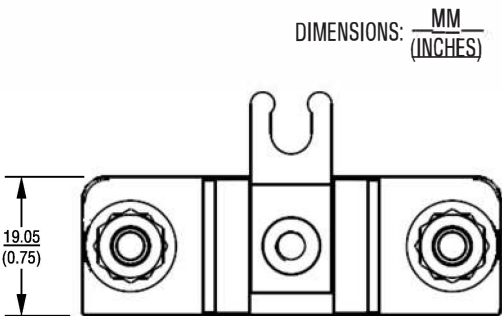
Notes:

- ¹ Network Applied
- ² Exceeds Telcordia (Bellcore) GR 1361
- ³ Surpasses Telcordia GR 974
- ⁴ RUS (REA) PE-80
- ⁵ Protector may short to ground

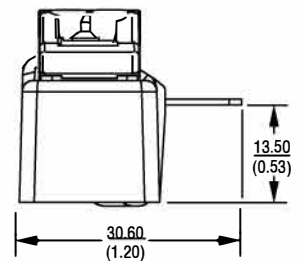
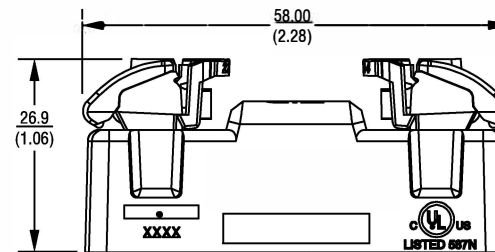
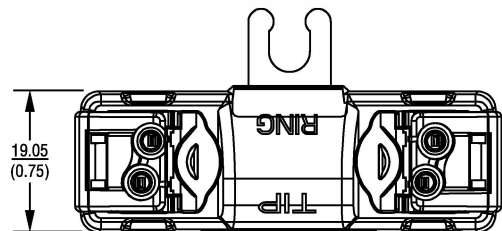
C-2377-45 Series Maximum Duty Station Protector

Product Dimensions

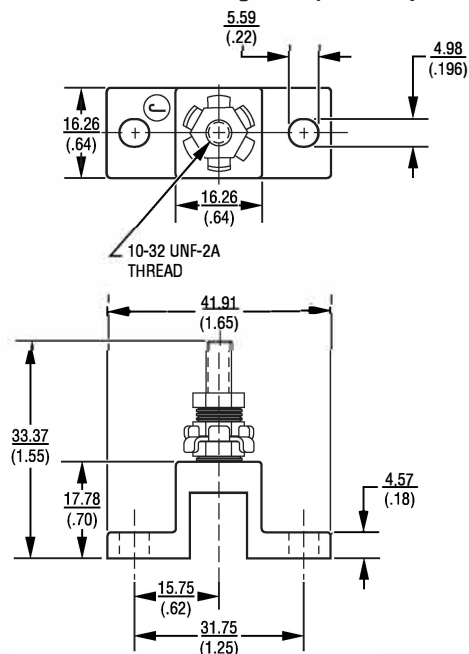
C-2377-45-HS, C-2377-45-BC



C-2377-45-HS-IDC, C-2377-45-BC-IDC





2372-02 Ground Mounting Stud (order separately)



How To Order

- C-2377-45-HS.....Binding Post Connectors
- C-2377-45-BC Balanced Capacitance, Binding Post Connectors
- C-2377-45-HS-IDC Insulation Displacement Connectors
- C-2377-45-BC-IDC Balanced Capacitance, Insulation Displacement Connectors

Related Products

-  MRA-TP01.....Test Clip for IDC
-  MRA-IRT1..... Insulation Tool for IDC