

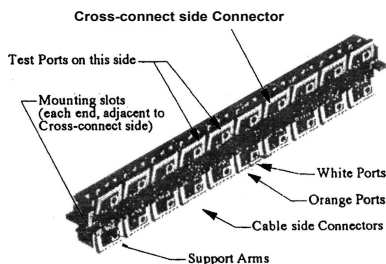


MINI-ROCKER 10 PAIRS SYMMETRICAL CONNECTOR MODULES

INSTRUCTIONS FOR INSTALLATION AND USE

1. DESCRIPTION:

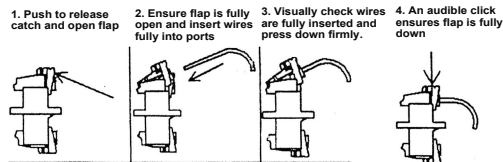
Mini-Rocker Connector Modules provide a convenient on site wired distribution point when housed in a suitable box or enclosure. The connectors are of the 'insulation displacement' type and are filled with a high viscosity compound to prevent the ingress of moisture. No tools are required to make the connection. Both sides of the connector will accept 0.4mm (26AWG.), 0.5mm (24 AWG.) and 0.63mm (22AWG.) copper conductors with insulations from foam skin to duplex jumper wire insulation. Each pair is testable from the cross connect side.



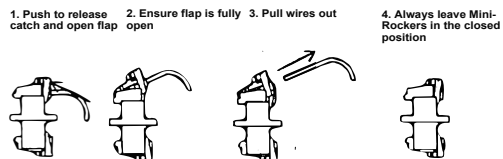
2. OPERATING THE MINI-ROCKER:

Note: Mini-Rockers, as supplied, are fully closed and should remain so until used to avoid ingress of moisture, or foreign bodies. NEVER LEAVE THEM IN THE OPEN CONDITION.

CONNECTING WIRES:

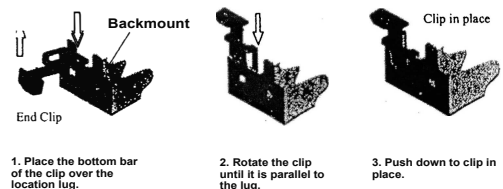


DISCONNECTING WIRES:



3. FIXING THE END CLIPS:

The modules are fitted to a "backmount" with colored plastic clips: green for the exchange field and blue for the distribution field. These should be fitted as indicated below. If numbered clips are to be used then they should be fitted to the L.H. side with No. 1 at the top followed by 11, 21 etc. through 91 indicating the adjacent pair No. Repeat for the next ten rows and so on to the bottom of the backmount.

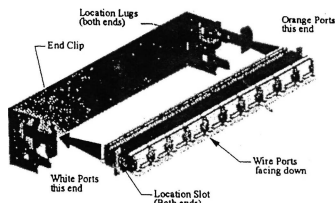


3a. TO REMOVE AN END CLIP:

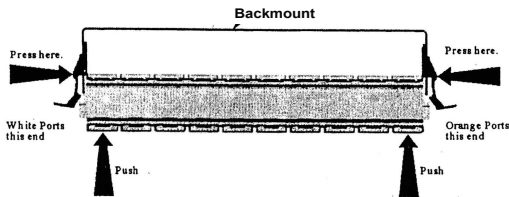
Push the top of the clip towards location lug and draw it away from the backmount.

4. INSTALLING THE MINI-ROCKERS:

4a. Mini-Rockers are normally fitted such that the wire ports are facing upwards on completion of the installation. In order to achieve this it is necessary to first fit them with the cable side connectors remote from the backmount with the wire ports facing downwards as shown below. The wire ports are coloured, white and orange. With the connector strip correctly positioned the white ports will be to the left.



4b. Position the connector strip between the end clips, locate it on the lugs and push into place whilst pressing inwards on the End Clips with fingertips. It is particularly important to press inwards on the End Clips when fitting the first Mini-Rocker, as this prevents the flanges of the Backmount from being displaced under the influence of the End Clips.



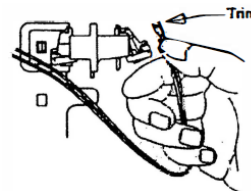
Never use excessive force when fitting Mini-Rocker modules. If the module will not push easily onto the backmount then it is probably not aligned correctly with the location lugs.

5. REMOVING MINI-ROCKERS FROM BACKMOUNTS:

At one end, push the top of the end clip away from the Mini-Rocker enough to release the catch. Ease the Mini-Rocker away from the backmount, just enough to prevent the catch from re-engaging when released. Do the same at the other end and then, holding the Mini-Rocker at both ends pull it squarely away from the backmount. Always pull the Mini-Rocker evenly away from the backmount to avoid damage to the location lugs.

6. INSTALLING THE WIRES:

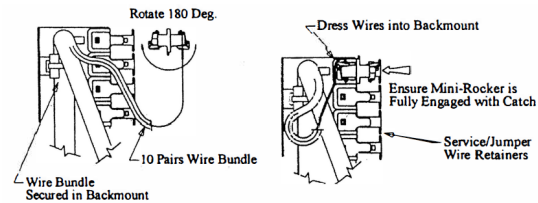
With the connector strip mounted as described in 4a above, take the first pair of wires to be connected and holding them across four fingers as shown below, position them adjacent to the first connector and cut them off level with the top of the connector. This will ensure enough wire for re-termination.



Make the connection as in section 2. Proceed along the strip in the same manner until all ten pair connections are made. Check that all are wired correctly. If an error has been made, the connectors may be reopened: (see section 2 - Disconnecting Wires). Cut off about 10mm (3/8") of the wires, reposition them into the correct ports and close the connector as before.

7. REPOSITIONING THE MINI-ROCKER STRIP:

The connector strip must be repositioned in order to make the cross-connection connectors accessible. Remove the Mini-Rocker strip from the Backmount as described in 5 above, and rotate it through 180° before replacing it onto the backmount as described in 4b.



8. CONNECTING THE SERVICE/JUMPER WIRES:

Allowing sufficient spare wire for subsequent connections, select the connector required and in a similar manner to that employed on the cable side, make the pair connection.

Dress the wires into the gap formed between the connector strips. Run them to one side and clip them under the wire retainers on the end clips. To prevent an excessive buildup of wires, it is best to run five pairs of wires to each side. The first five to the left and the remainder to the right. Remove service/jumper wires as described in 2. If wires are not to be refitted, snap the connector closed.

Mini-Rockers should always be left in the closed condition to avoid ingress of moisture or foreign bodies.