

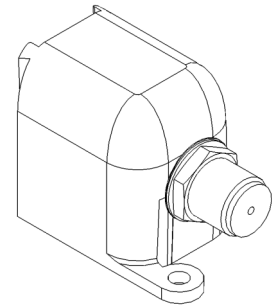
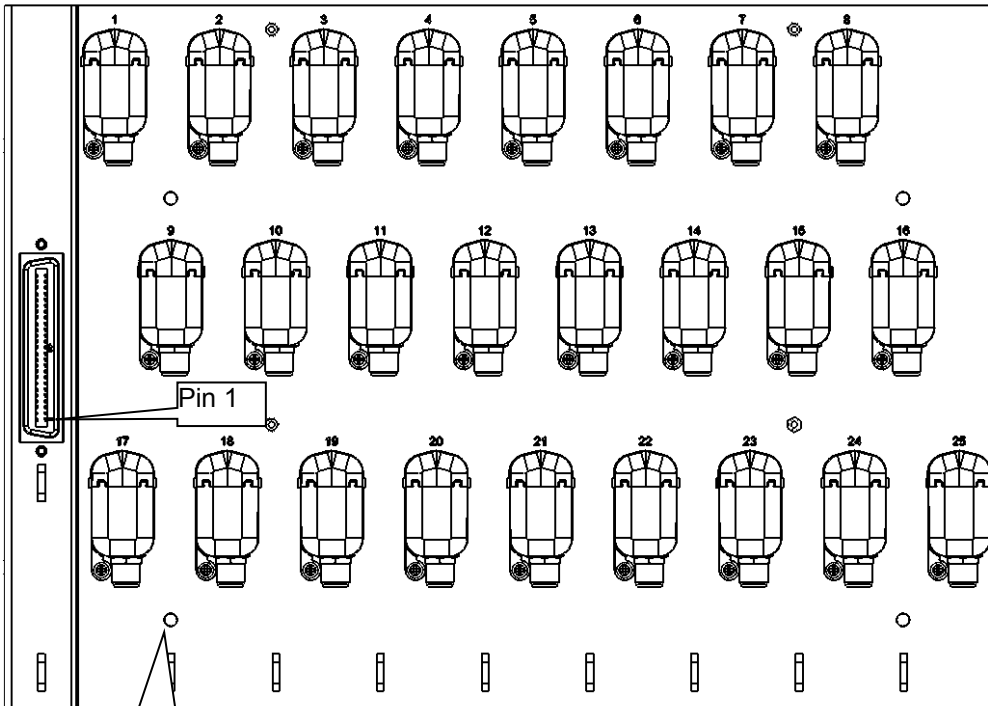


# KA-1000 25-PORT DISTRIBUTION SYSTEM

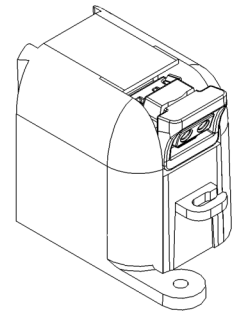
## Installation Guidelines

The KA-1000 25-Port Distribution System has two connection interfaces:

- **Plug-in module:**
  - **Balun:** for connection to 75Ω coaxial cable
  - **IDC:** for twisted pair.
- **RJ21 Receptacle** - DSL signal.



KA-1000 Balun Module  
[SA-3602-0001]



KA-1000 IDC Module  
[SA-3605-0001]

Mounting Hole  
(#8 screw required)  
4 places

### RJ21 PINOUT

Port	Signal	Pin
1	RING	1
	TIP	26
2	RING	2
	TIP	27
3	RING	3
	TIP	28
4	RING	4
	TIP	29
5	RING	5
	TIP	30
6	RING	6
	TIP	31
7	RING	7
	TIP	32
8	RING	8
	TIP	33

Port	Signal	Pin
9	RING	9
	TIP	34
10	RING	10
	TIP	35
11	RING	11
	TIP	36
12	RING	12
	TIP	37
13	RING	13
	TIP	38
14	RING	14
	TIP	39
15	RING	15
	TIP	40
16	RING	16
	TIP	41

Port	Signal	Pin
17	RING	17
	TIP	42
18	RING	18
	TIP	43
19	RING	19
	TIP	44
20	RING	20
	TIP	45
21	RING	21
	TIP	46
22	RING	22
	TIP	47
23	RING	23
	TIP	48
24	RING	24
	TIP	49

Port	Signal	Pin
25	RING	25
	TIP	50