

DOMED ENCLOSURE 25 PAIR SA-DTE1-P025



Description:

The SA-DTE1-P025 Copper Termination enclosure is a DOME closure which provides termination of service drops (copper distribution networks)

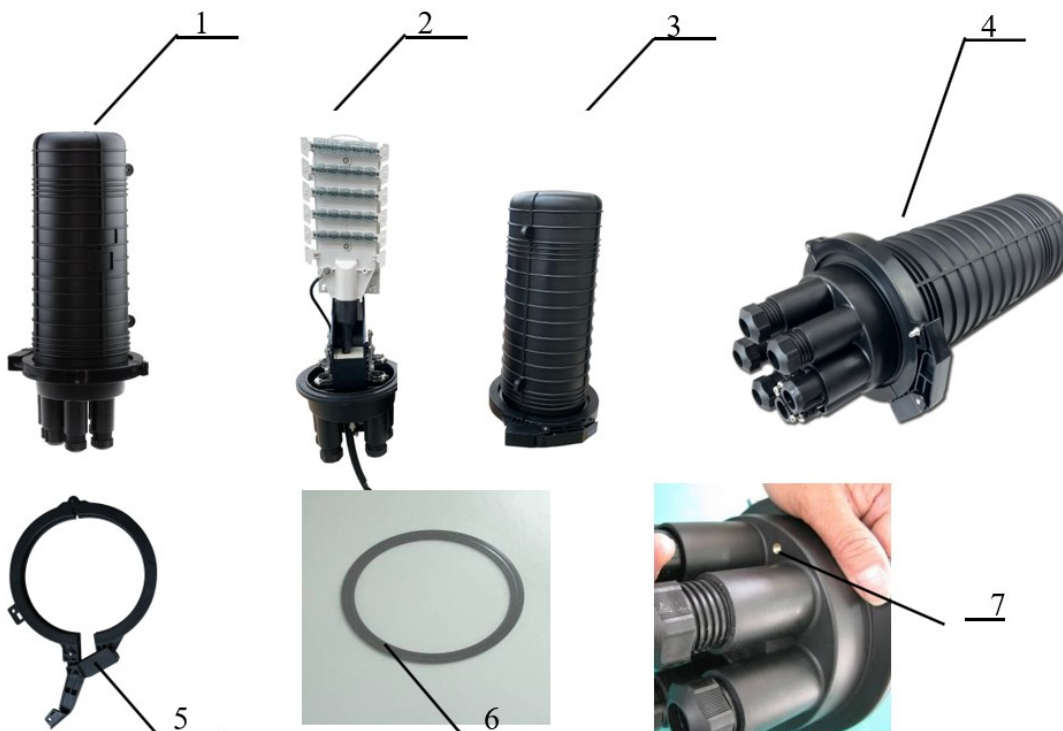
The SA-DTE1-P025 has 4 round mechanical drop entrances and 1 oval mechanical cable entrance for cables. The rubber forming provides excellent sealing performance against water and dust intrusion and the screw-extrusion mechanical seal mechanism facilitates the installation .

The SA-DTE1-P025 is suitable for aerial, pole, wall and underground Installations (hand-hole, man-hole).

The SA-DTE1-P025 is an ideal solution for copper termination enclosure and provides IP level IP68 Protection

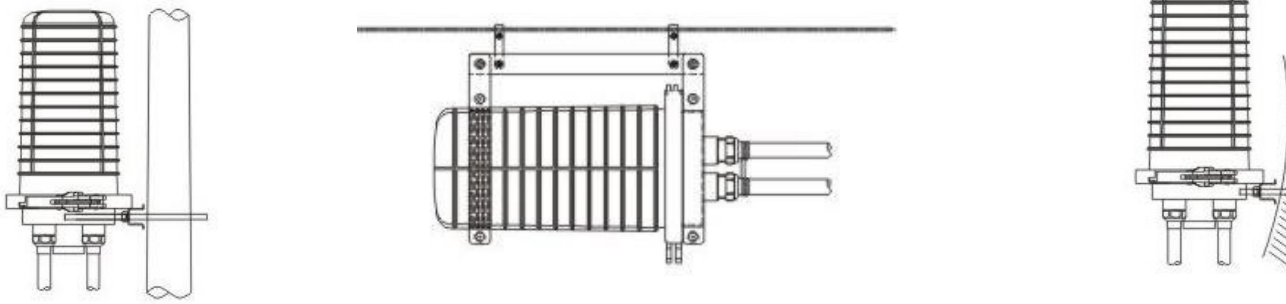
Main Components:

1) DOME Body, 2) CMRA Terminal, 3) Cable/Drop Storage, 4) Cable & Drop Entrance, 5) Clamp, 6) Rubber Seal, 7) Ground Lug.



Installation:

1) Mount the SA-DTE1-P025 using the preference, orientation and location required. Pole, Aerial, Wall, Hand-hole/Man-hole.



2) Splice in the tail of the 25 pair CMRA Terminal

3) Open the closure. Unscrew the lock of clamp, loosen the clamp, separate the body and entrance parts of DOME Closure.



① Clamp towards up ② Rotate the lock of clamp ③ Open the clamp

Note : Please use only appropriate force when separating the body of closure from the cable entrance. Unnecessary force may damage the closure. The seal is very strong.

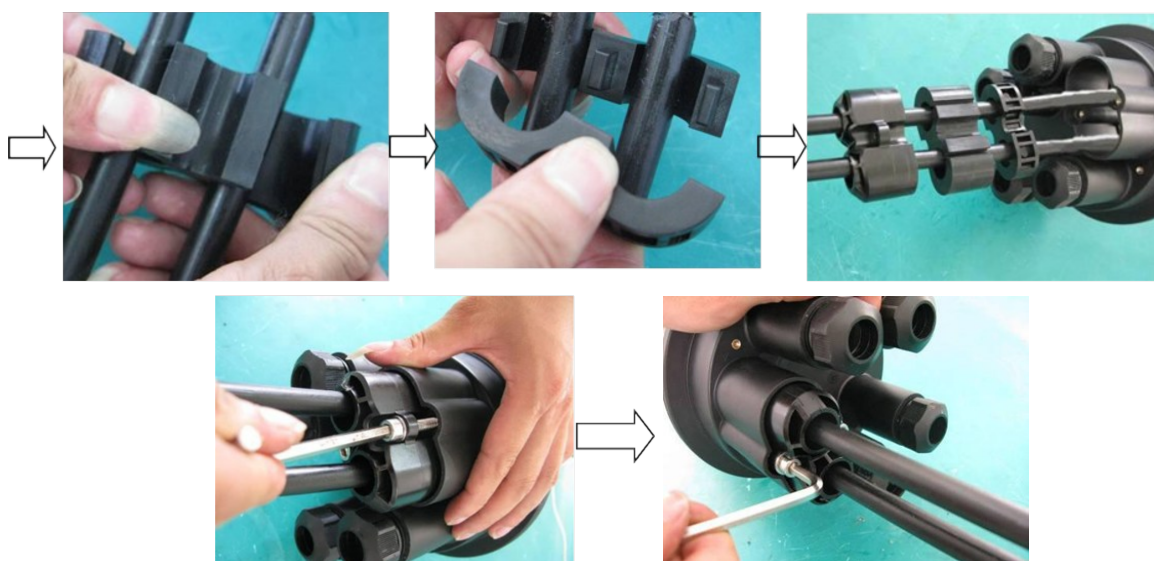
Remove and set the clamp in a safe secure location.

Installation Continued:

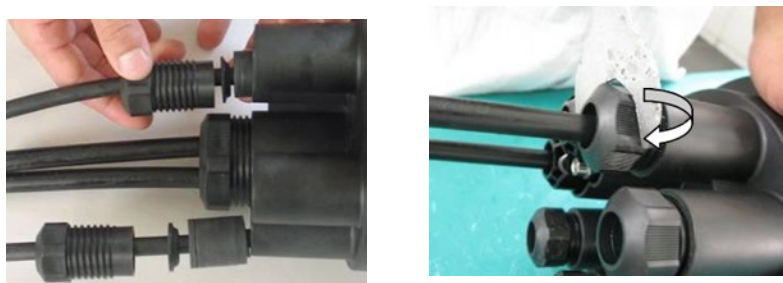
4) Select the cable/ drop entrance ports to be used, remove the glands and grommets

5) Place the cables/drops through cable gland, plastic gasket, rubber seal and screw extrude the gland until tight and the mechanical seal is complete.

*Oval two port entrance (use Allen Key to tighten)



*Round port entrance



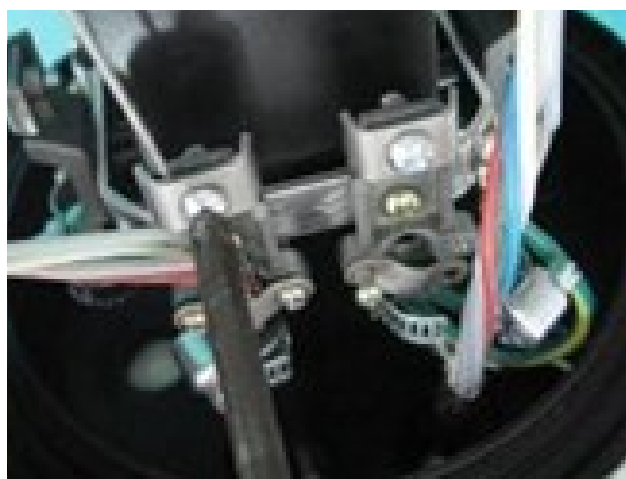
Reminder: The seal is a soft rubber material, blocker is a plastic material, please use care and do not over tighten.

Installation Continued:

6) Ground and bond the cable and drops using the supplied clamps per the local practice requirements.



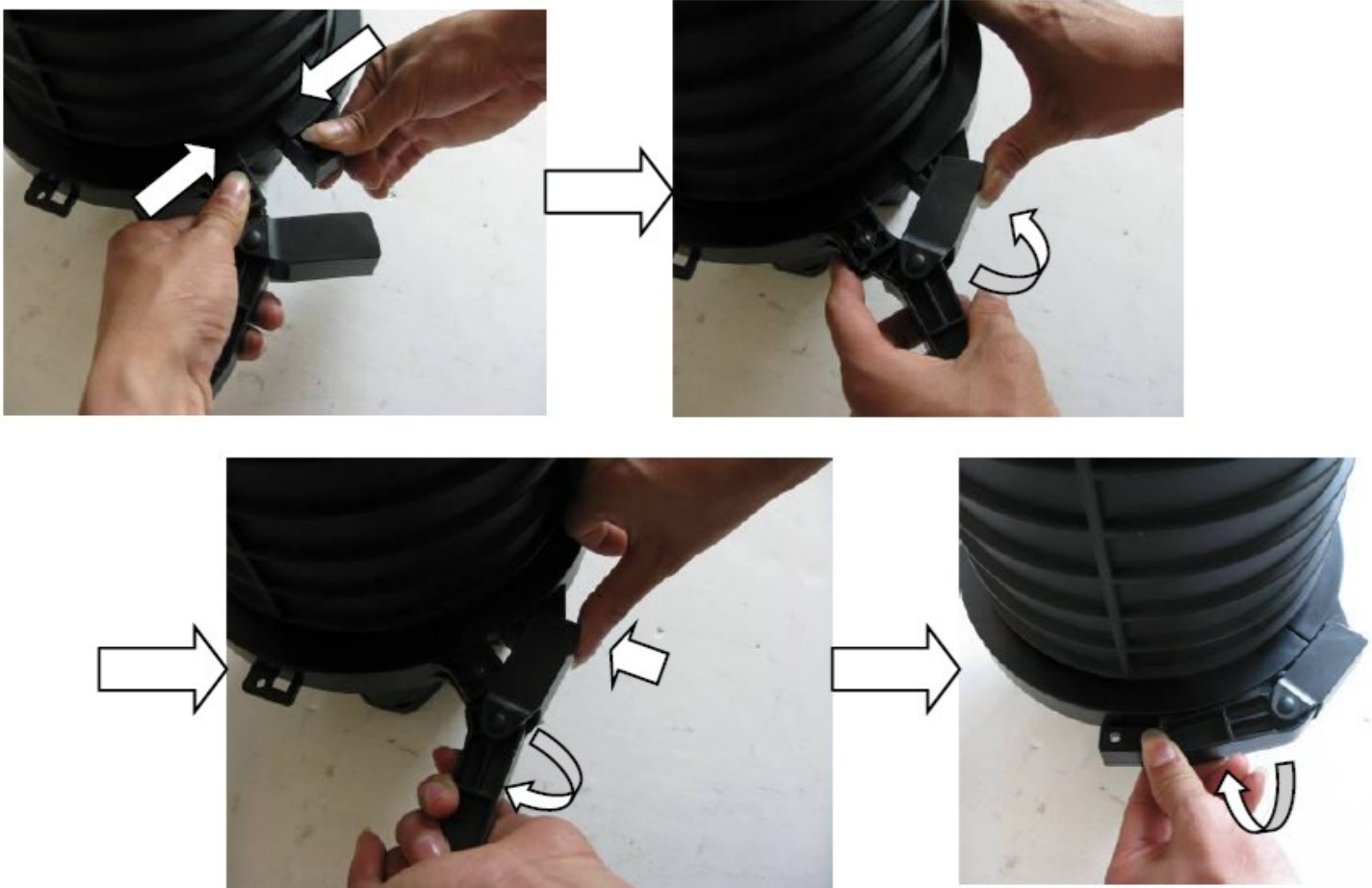
Reminder: The seal is a soft rubber material, blocker is a plastic material, please use care and do not over tighten.



Closing/ Sealing the Dome Enclosure

Set the DOME portion of the enclosure over the base cable entrance unit. Position the clamp over and around bringing the ridges. Then as shown below place and tighten clamp until closed.

(photos below)



Recommended Sealing Test

After the DOME enclosure is sealed, using the valve at the bottom, inject air (approx. 5-8 lbs) and check for leaks using local practices. This is to ensure the closure is fully sealed and safely installed.